

JASMINE DINING TOPPER

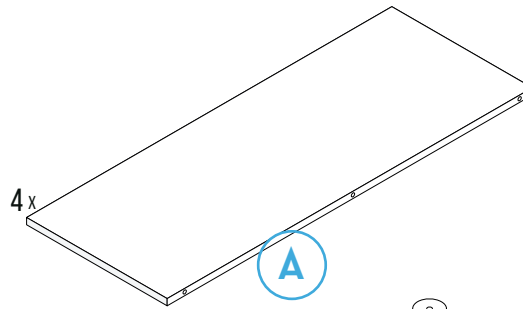
INVENTORY

DINING TOPPER

- A. 4 x Table Topper
- B. 4 x Black Silver Screws
with Rubber Piece
- C. 9 x Dowels
- D. 1 x Glue Stick

NOT INCLUDED:

- E. 1 x Phillips Screwdriver



4 x



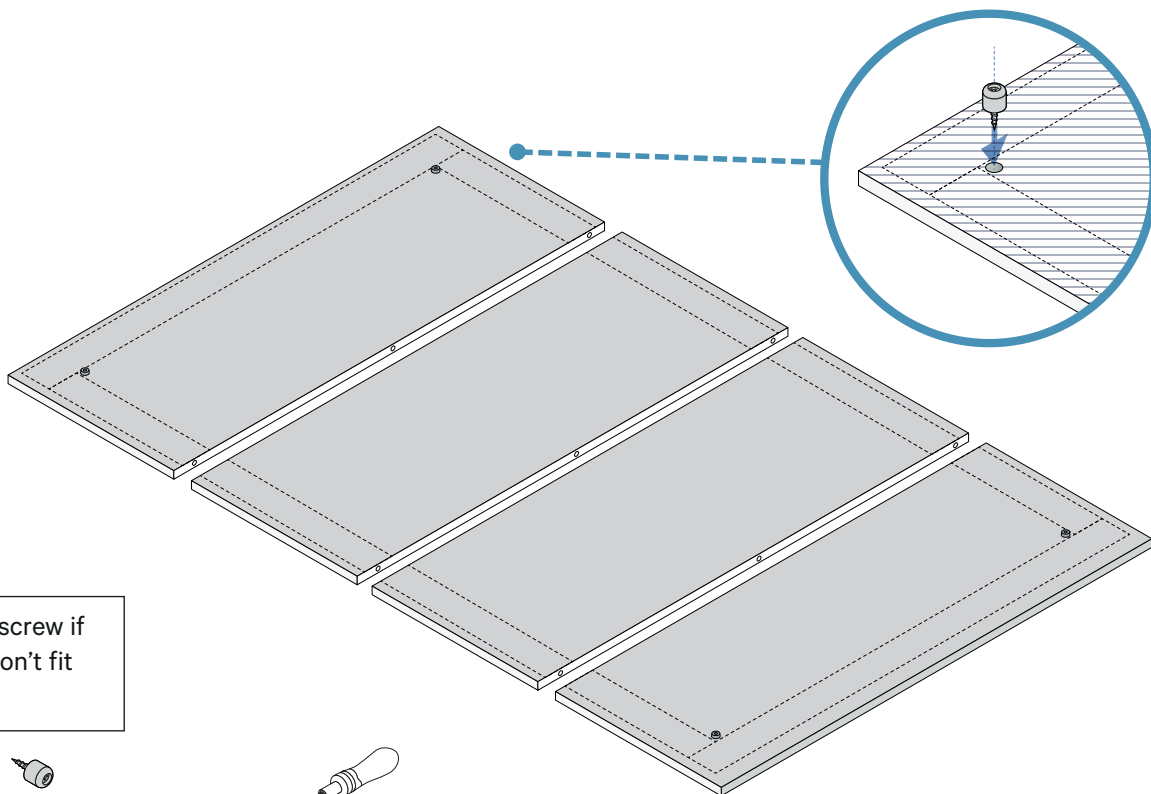
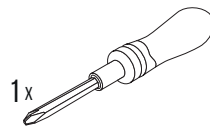
9 x



1 x



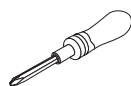
1 x



Loosen that screw if
the topper won't fit
on the table.

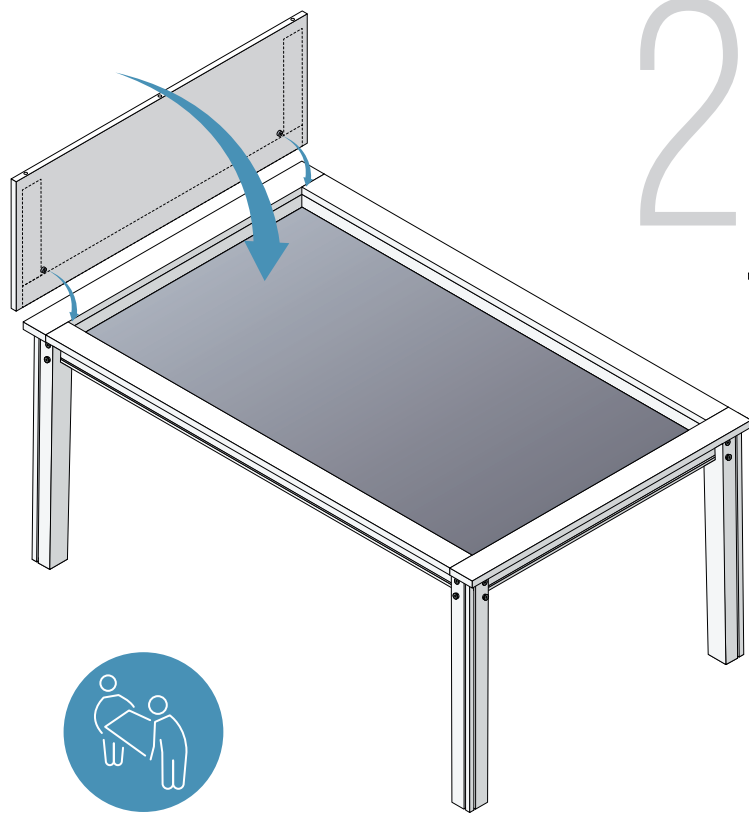


4/4

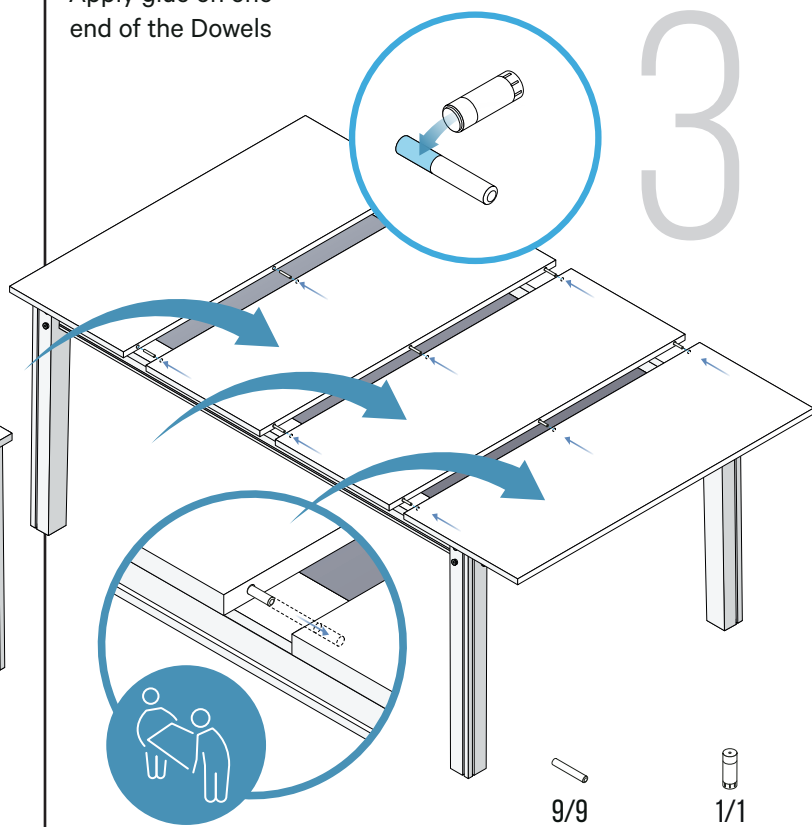


B. Short Black Screws with Rubber Piece | E. Phillips Screwdriver

JASMINE DINING TOPPER



Apply glue on one end of the Dowels



9/9 C. Dowels | 1/1 D. Glue Stick

