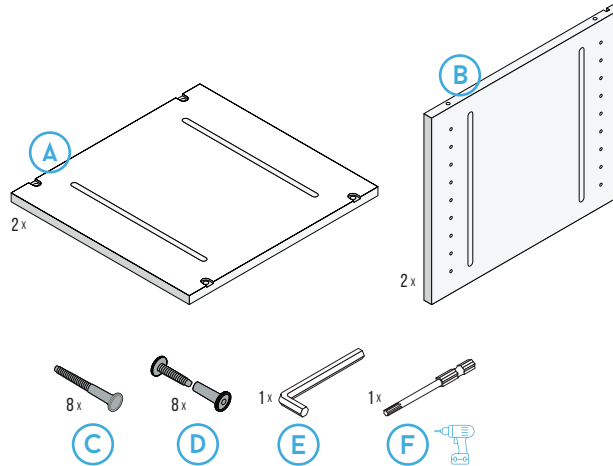


## INVENTORY

- A. 2 x Side Panels
- B. 2 x Horizontal Panels
- C. 8 x Bolts
- D. 8 x Coupling Bolt

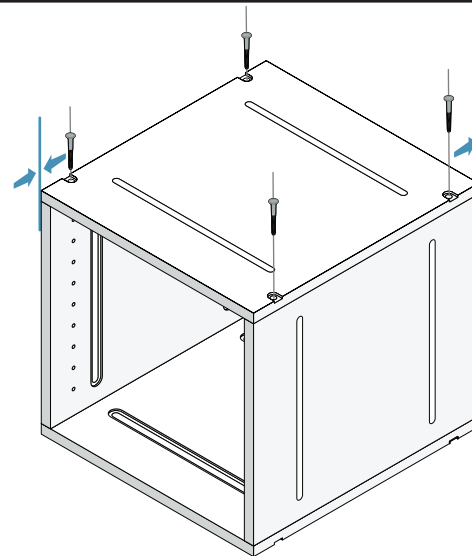
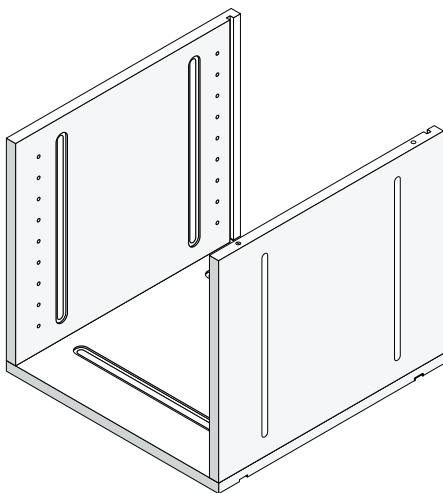
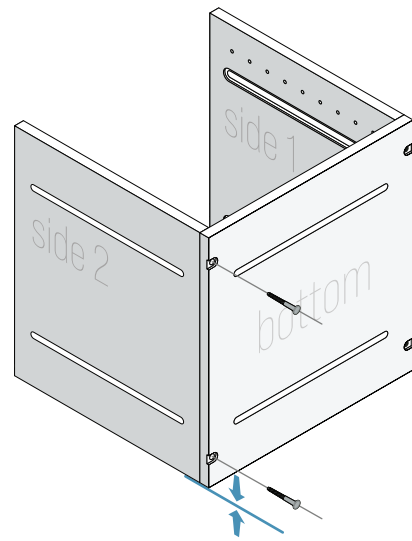
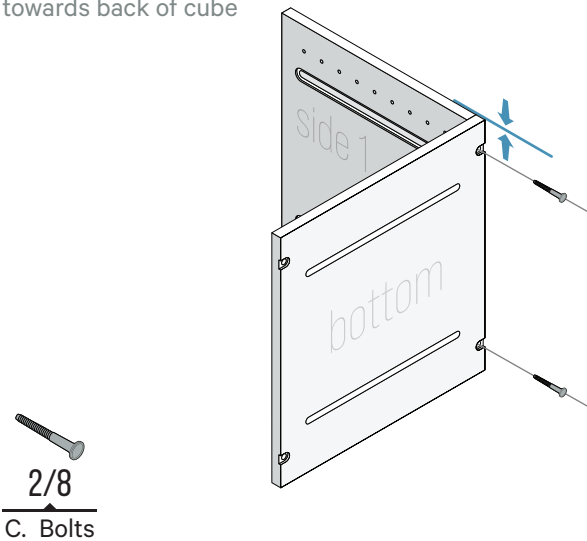
## INVENTORY: TOOLS

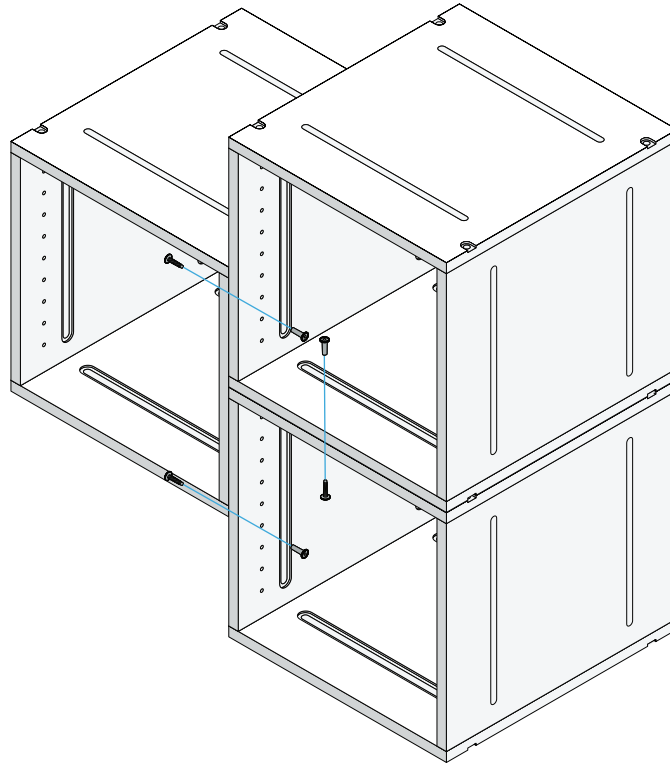
- E. 1 x Hex Wrench
- F. 1 x Straight Hex Bit  
(for a power drill. Highly recommended)



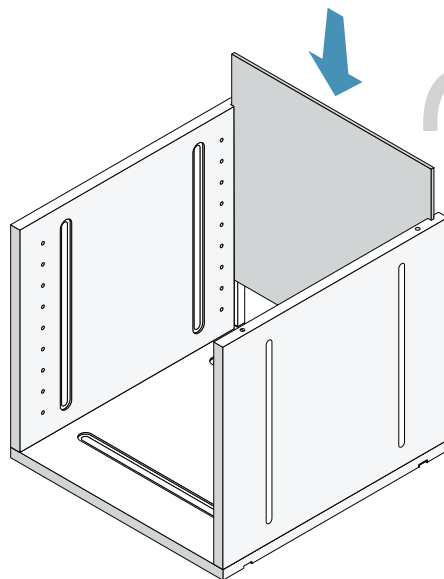
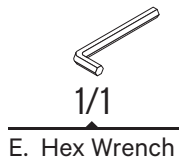
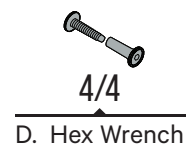
## Assembling a Cube

Make sure to assemble pieces with groove towards back of cube





Connecting multiple cubes together



Assembling the back (if ordered)